

March 22, 2011

8 days and counting!

Class starts in

Today's Agenda ~
MCA ??'s
Homework
Finish 8.2.3



Please be ready.

Homework: p. 407 (21-25)

MCA ??'s



We've done 2, 7.

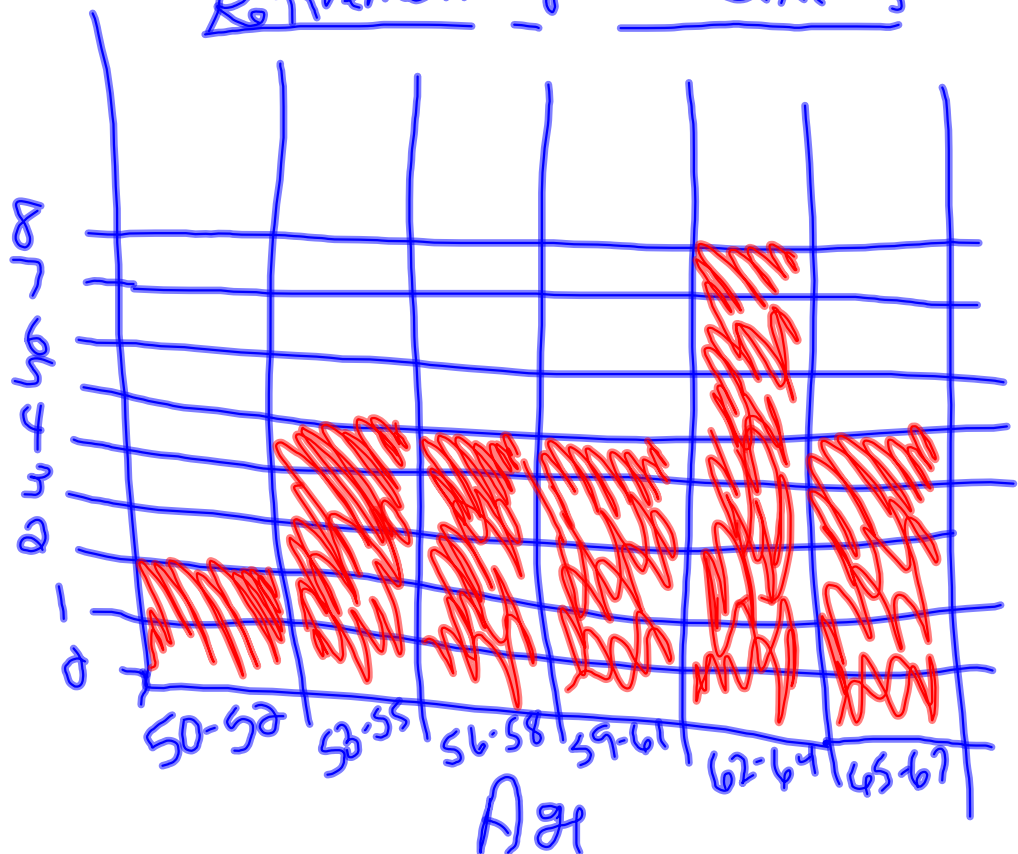
⑤

# of book	Frequency
0	11 2
1	5
2	4
3	3
4	0
5	1 1

⑨

Retirement Ages of Detectives

Frequency



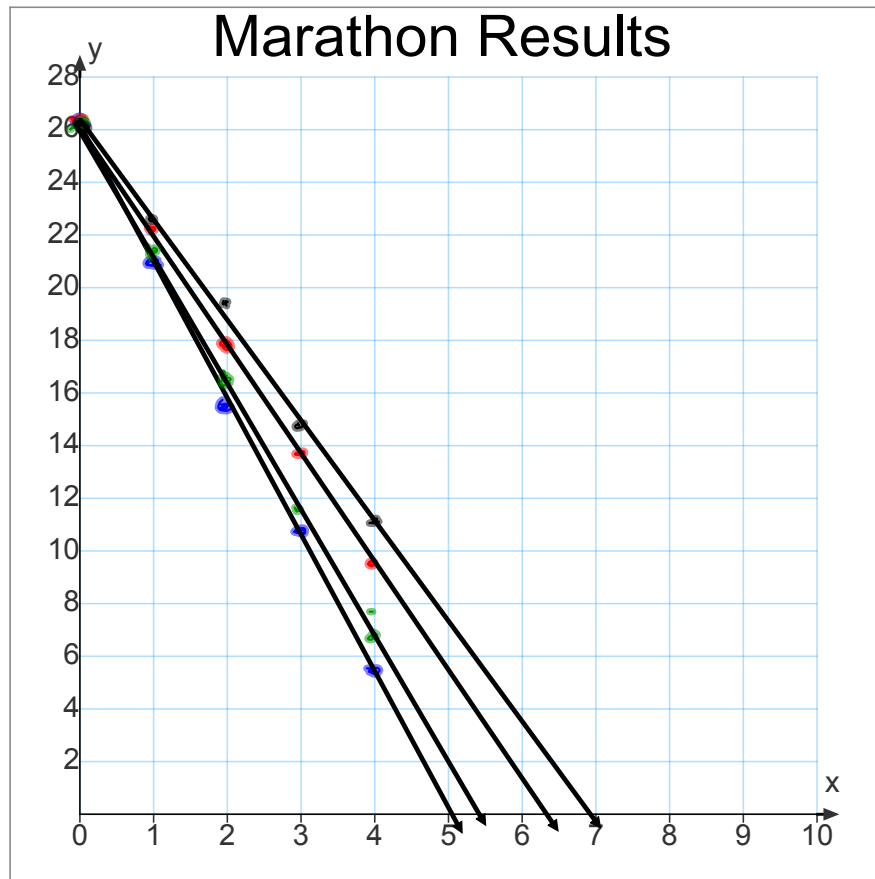
4a)

Marathon Results

Time (hours), t	0	1	2	3	4
Nadia's Distance from Finish, N	26.2	21	15.8	10.6	5.4
Helena's Distance from Finish, H	26.2	22.1	18	13.9	9.8
Bryson's Distance from Finish, B	26.2	21.35	16.5	11.65	6.8
Mark's Distance from Finish, M	26.2	22.4	18.6	14.8	11

4b)

Distance in miles



Time in hours

c) Similar → all downhill, all linear
diff → different slopes

Slopes

$$\text{Nadia} = -5.2$$

$$\text{Bryson} = -4.85$$

$$\text{Helena} = -4.1$$

$$\text{Mark} = -3.8$$

d) Time to finish?

$$\text{Nadia} = \text{about } 5 \text{ hours}$$

$$\text{Bryson} = \text{about } 5 \frac{1}{2} \text{ hrs}$$

$$\text{Helena} = \text{about } 6 \text{ hours}$$

$$\text{Mark} = \text{about } 7 \text{ hours}$$

e) Equations

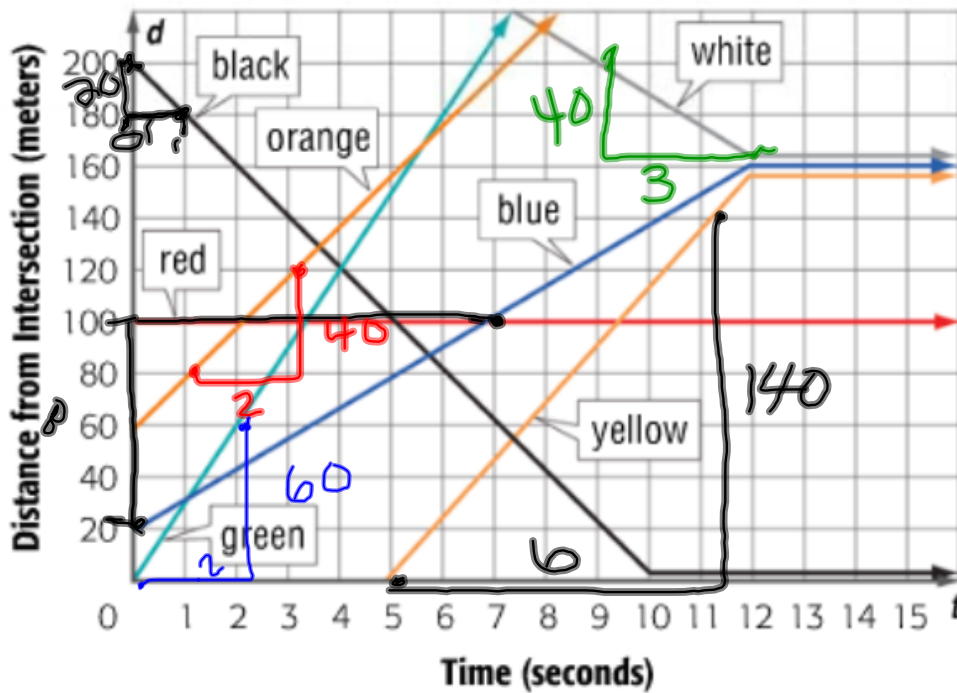
$$\text{Nadia} \rightarrow N = 26.2 - 5.2h$$

$$\text{Helena} \rightarrow H = 26.2 - 4.1h$$

$$\text{Bryson} \rightarrow B = 26.2 - 4.85h$$

$$\text{Mark} \rightarrow M = 26.2 - 3.8h$$

Cars on the Highway



1. In what direction is each car moving in relation to the intersection?

black *toward, stopped* white *towards then stops*
 orange *away* red *proceed*
 blue *away, stopped* yellow *away then stops*
 green *away*

2. Compare the cars' speeds.

black $\frac{-20}{10} = -20 \text{ mps}$ white $\frac{-40}{3} = 13.\bar{3}$
 orange $\frac{40}{2} = 20 \text{ mps}$ red 0 mps
 blue $\frac{80}{7} = 11.42 \text{ mps}$ yellow $\frac{140}{6} = 23.\bar{3}$
 green $\frac{60}{2} = 30 \text{ mps}$

3. Do any of the cars stop during their trips? If so, which cars?