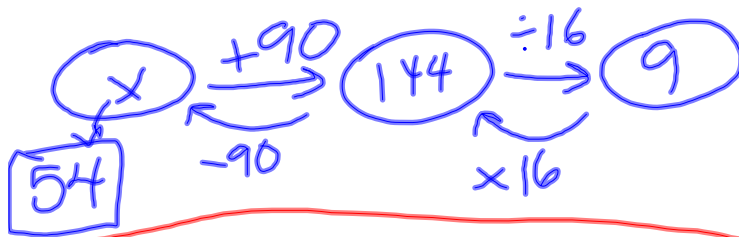


75) 15 students \rightarrow 6 yrs.
 Let's say they are all 6 yrs old

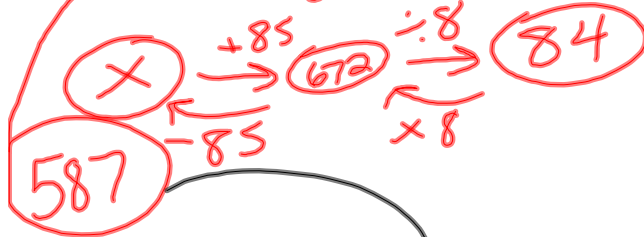
$$\frac{15 \cdot 6 + x}{16} = \frac{90 + x}{16}$$

$$\frac{90 + x}{16} = 9$$



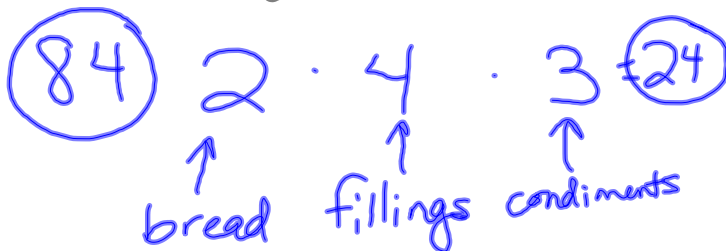
76) 8 players
 1 marksman other 7 marksmen

$$\frac{85 + x}{8} = 84$$

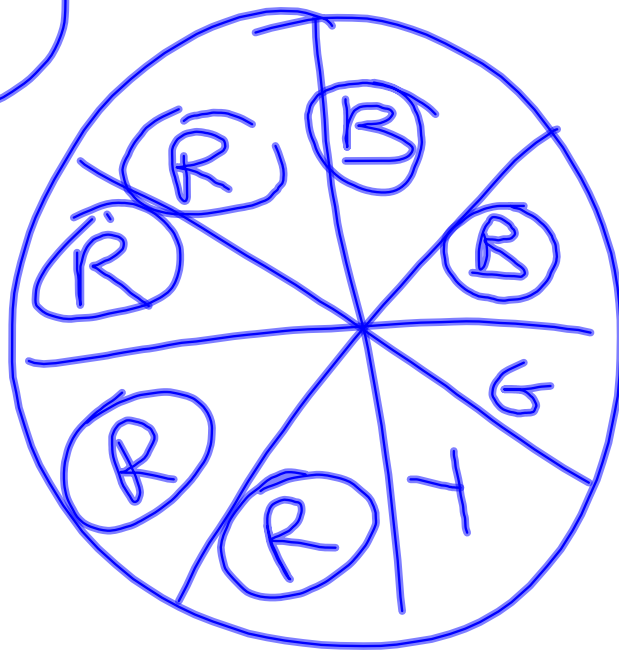


Actually

$$\frac{58 + 587}{8} = 80.625$$



80



$$\begin{aligned} P(\text{red or blue}) &= \frac{6}{8} \\ &= \frac{3}{4} \end{aligned}$$