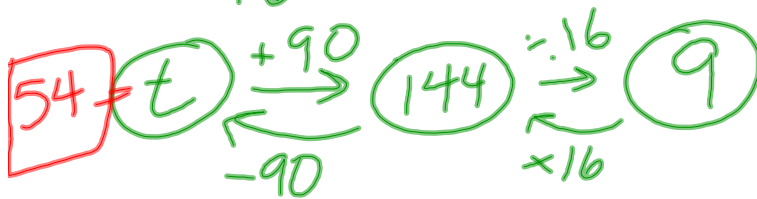


75) 15 kids \rightarrow mean = 6 yrs.
 Let's pretend: all kids are
 6 years old.

$$6 \cdot 15 = 90 \text{ years of life}$$

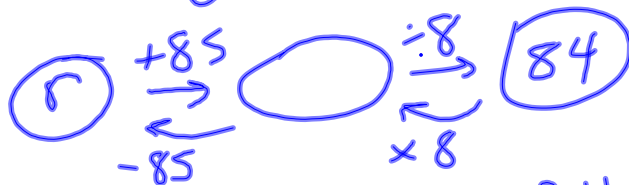
$$\frac{90 + t}{16} = 9$$



76) If 85 = 1 player's score
 then 84 = mean

1 marksman \downarrow 85 + r \leftarrow total for other 7 players

$$\frac{85 + r}{8} = 84$$



$$r = 587 = \text{total of other marksmen}$$

But really, \downarrow

$$\frac{58 + 587}{8} = 80.625$$

