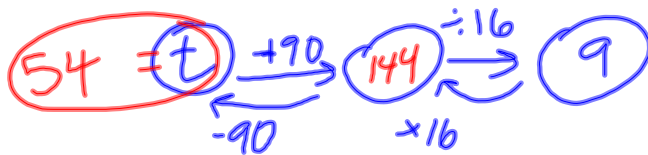


(75) 15 kids \rightarrow mean = 6

Let's pretend that all 15 kids are 6 yrs. old.

$15 \cdot 6 = 90$ years of life

$$\frac{90 + t}{16} = 9$$



(76) If he scored 85pts, then the team mean = 84

#1? What total score did the other 7 players get?

$$\frac{85 + S}{8} = 84$$



But really he scored 58pts

$$\frac{58 + 587}{8} = \boxed{80.625}$$

(84) 2 · 4 · 3 = $\boxed{24}$

↑ bread ↑ fillings ↑ condiment